

Casting **Foundation**,  
Crafting **Innovations**



 MAHADEV  
PRECISION  
CAST

## Preserving Integrity, Pioneering Legacy

Mahadev Group is dedicated to delivering unrivaled casting solutions underpinned by exceptional service. We take pride in being a family-owned business that is driven by the same values & principles as when we started our business in 1962. With a rich history spanning over five decades, Mahadev Precision Cast is today renowned for its innovative approach and commitment to integrity & excellence in serving its clients.

# 50

## 24000mt

Installed Capacity Per Year

## 300kg - 3tons

600lbs - 6620lbs

Casting (single piece) Weight Spectrum

## 4,00,000sq.ft.

Manufacturing Plant Size

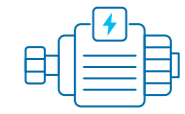
### Sectors We Serve



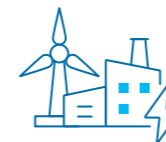
Machine Tool  
Industry



Earth Moving  
Equipment Industry



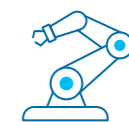
Electric Motor  
Industry



Power Generation  
Industry



Heavy Engineering  
Industry



Robotics and  
Automation Industry

### Our Certifications



Quality Management  
ISO 9001:2015

by Bureau Veritas



Environmental Management  
ISO 14001:2015

by Bureau Veritas

## Surpassing Promises, Strengthening Relations

Mahadev is a manufacturer of superior quality cast iron castings, but our commitment extends beyond that. We prioritize our customers by putting them at the heart of everything we do. Our goal is to deepen their trust by providing them with the finest, most reliable, and durable castings. We work closely with our customers to develop castings that meet their specific requirements and strive to provide the best possible products and services. At Mahadev, we are committed to our customer's success, and our actions are guided by the sole principle - 'You First'.

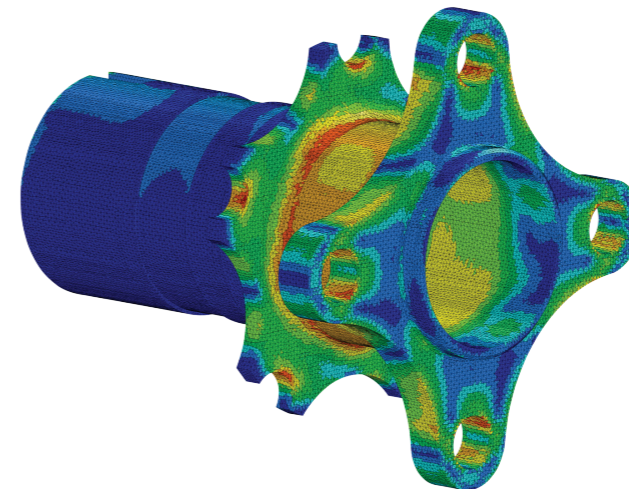
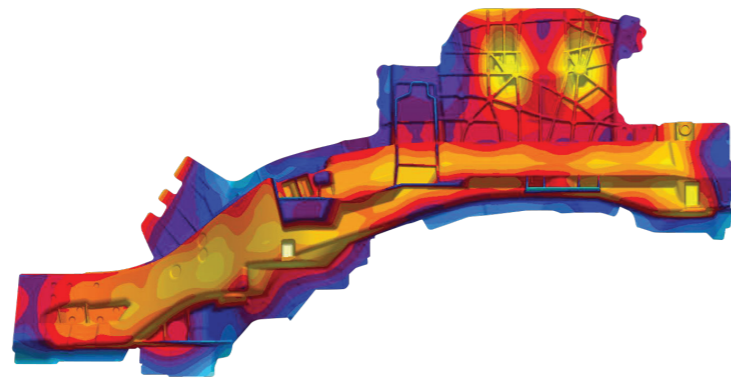


## Integrating Operations, Inspiring Transformations



### Design

We assist clients in defining product specifications and optimising the manufacturing process, not only to ensure the best technical and qualitative results, but also to keep overall manufacturing costs to a minimum. We utilise NX-Stein CAD, proE FEM to compute stress, and Magmasoft to model the melting process throughout the co-design stage.



### Preliminary Design Capabilities

At Mahadev, our design process involves several techniques that help optimize manufacturing designs, identify and address issues before production, and ensure the final product's top integrity. It involves the following techniques:

- Residual stress prediction
- Liquid metal flow simulation
- Structural stress modelling
- Heat treatment & cooling simulation
- Mechanical properties prediction
- 3D CAD modelling

## Melting

To ensure optimal metal availability and power efficiency, we utilize medium-frequency induction melting furnaces. In addition, we continuously upgrade our technology and control systems by incorporating modern furnace auxiliaries. These efforts enable us to provide our clients with high-quality metal casting solutions.

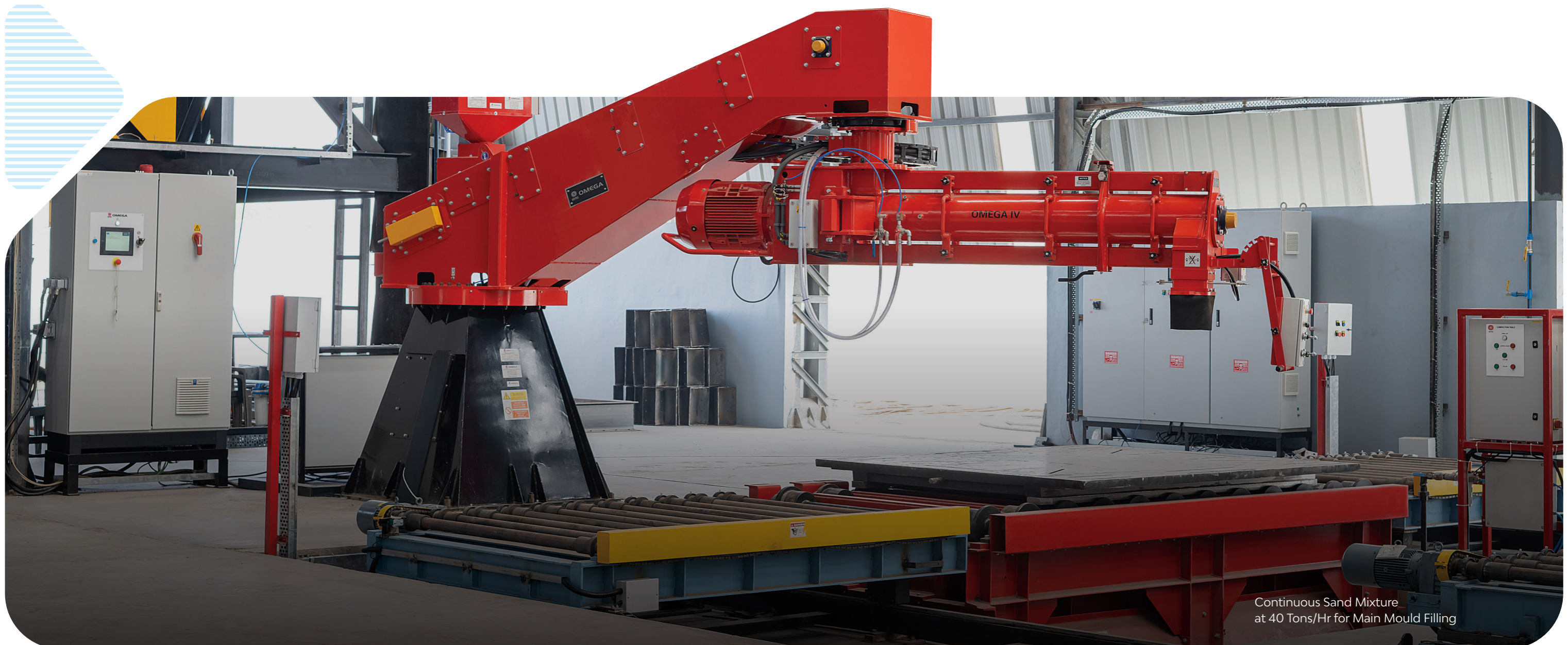


## Moulding

At our foundry, we have made substantial investments in advanced technology to produce high-precision castings. Our cutting-edge fully automated moulding lines from Omega Sinto and SSEC-India enable us to produce high-quality moulds with excellent dimensional accuracy and surface finish. Our quick loop systems accommodate various sand fill times, which are crucial for effective moulding and pre-curing. With the ability to accommodate moulds up to 3500\*2500 mm, our moulding lines cater to a wide range of casting needs, ensuring that we meet our client's unique requirements.



Sand Mixture at 20 Tons/Hr for Centre Core Filling



Continuous Sand Mixture at 40 Tons/Hr for Main Mould Filling

## State-of-the-art Mould Handling Robotics

At our foundry, we have implemented a cutting-edge fully automated track time system for rapid mould transitions and precise mould assembly. Our customized robots are equipped with advanced gripping and lifting equipment that allow effective mould handling while completing critical operations like stripping, pouring, and cleaning easily.

As automation technology continues to evolve we are committed to staying ahead of the curve, delivering cost effective and efficient manufacturing solutions and, confident in surpassing our client's expectations.



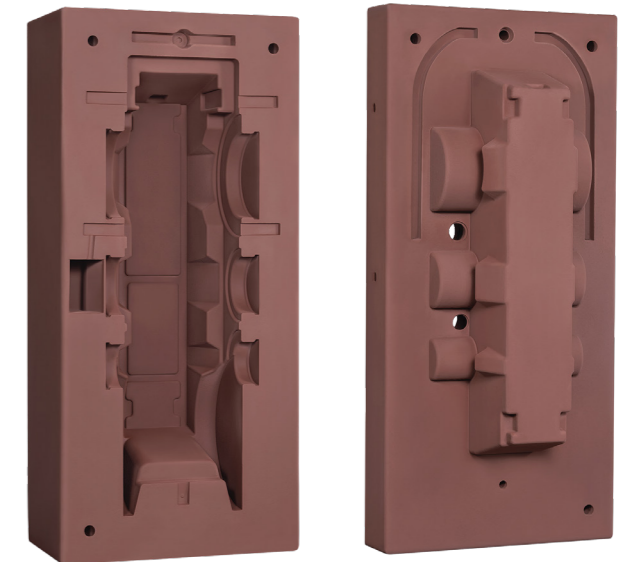
3500 X 2500mm plate size  
moulding line

## Coatings

Innovation is the key to our success, and that's the core principle of Mahadev Group. We manufacture our own Binders, Resins and Foundry Auxiliaries.

In this industry, differentiation matters a lot in terms of the fineness and richness of the products. Our primary strategy is to cater powerful products to our esteemed customers based on three prior performance metrics:

- Enhanced Surface Finish,
- Reduced Defects in Sand related Casting
- Reduced usage of Sand Additives, Shots & Sand



## Paint

At our in-house paint shop, we execute our painting process and cater to customers' bespoke requirements for paint finishes. We carry out the painting process for castings using flow coating, spray coating, or dipping process methods. We meticulously follow the C3-C5 painting procedure. We provide our customers with a variety of paint finishes:

- Multi-Coat Epoxy finish
- Top and Primer Coats
- Zinc Rich Primer Coating

We also offer customisation in paint to meet the unique needs of our customers.

# Moulding Imagination, Mastering Creations

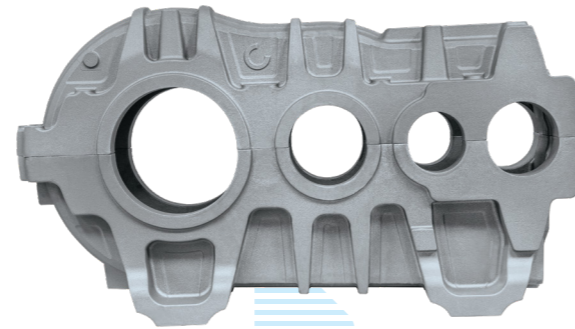
Mahadev Precision Cast is a leading provider of 100% customised heavy castings, catering to the diverse needs of its clients. With a rich experience of 50 years, the company has built a strong reputation for delivering precision-engineered products of the highest quality. The company's products are a testament to its exceptional quality standards, making it a trusted partner for businesses seeking reliable heavy casting solutions.



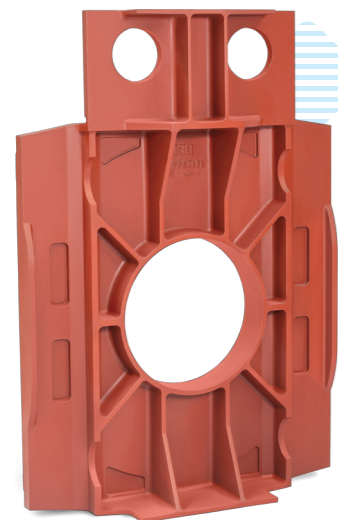
Electric Motor Housing



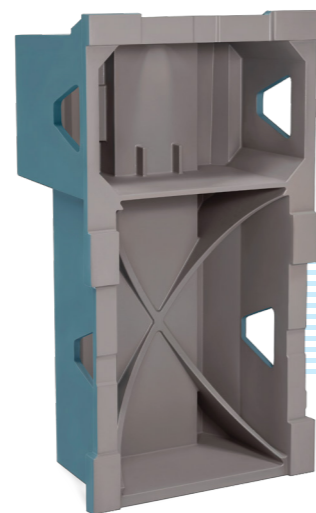
Drum



Heavy Gear Box Casting



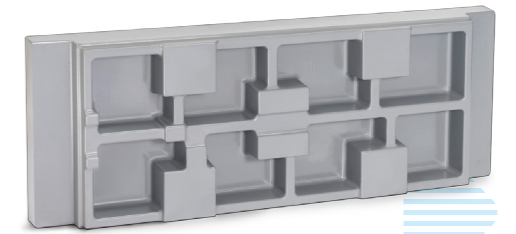
Robot Foundation Plate



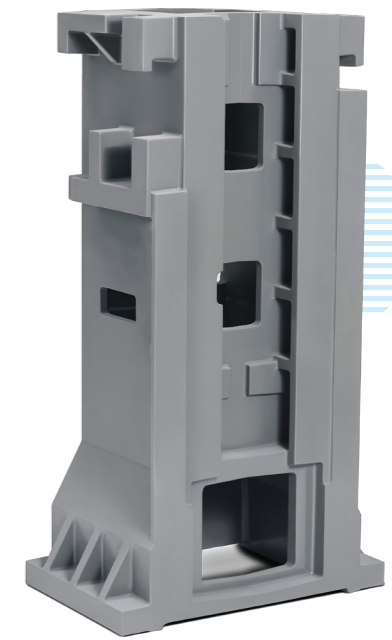
Base



Base



Table



Column



Saddle



Column

## Our Material and Grades

- Ductile Iron Castings with strong impact properties at Low Temperatures
- High silicon molybdenum ductile iron
- Austempered ductile iron
- Pearlitic grey iron

### Sg Iron

Type	Grade	Related Std.
S.G. Iron	EN GJS 400/12	EN 1563
S.G. Iron	EN GJS 400/15	EN 1563
S.G. Iron	EN-GJS-400/18	EN 1563
S.G. Iron	EN-GJS-400/18LT	EN 1563
S.G. Iron	EN GJS 600/3	EN 1563
S.G. Iron	EN GJS 600/7	EN 1563
S.G. Iron	EN GJS 500/7	EN 1563
S.G. Iron	EN GJS 600/6	EN 1563
S.G. Iron	EN-GJS-700-2	EN 1563
S.G. Iron	65-45-12	ASTM A536
S.G. Iron	80-55-06	ASTM A536

### Cast Iron

Type	Grade	Related Std.
Grey Iron	CLASS -1	46024 EX CL-1
Grey Iron	CLASS-20	ASTM A-48
Grey Iron	CLASS-25	ASTM A-48
Grey Iron	CLASS-30	ASTM A-48
Grey Iron	CLASS-35	46024 EX CL-1
Grey Iron	EN GG 20	EN 1691
Grey Iron	EN GG 25	EN 1691
Grey Iron	EN GJL 150	EN 1561
Grey Iron	EN GJL 200	EN 1561
Grey Iron	EN GJL 250	EN 1561
Grey Iron	EX.CL.3	46024 EX CL-1
Grey Iron	EXCL-1	46024 EX CL-1
Grey Iron	FG 150	IS 210
Grey Iron	FG 200	IS 210
Grey Iron	FG 220	IS 210
Grey Iron	FG 260	IS 210
Grey Iron	G-3500	ASTM A-159
Grey Iron	G 2500	ASTM A-159
Grey Iron	G-3000	ASTM A-159A

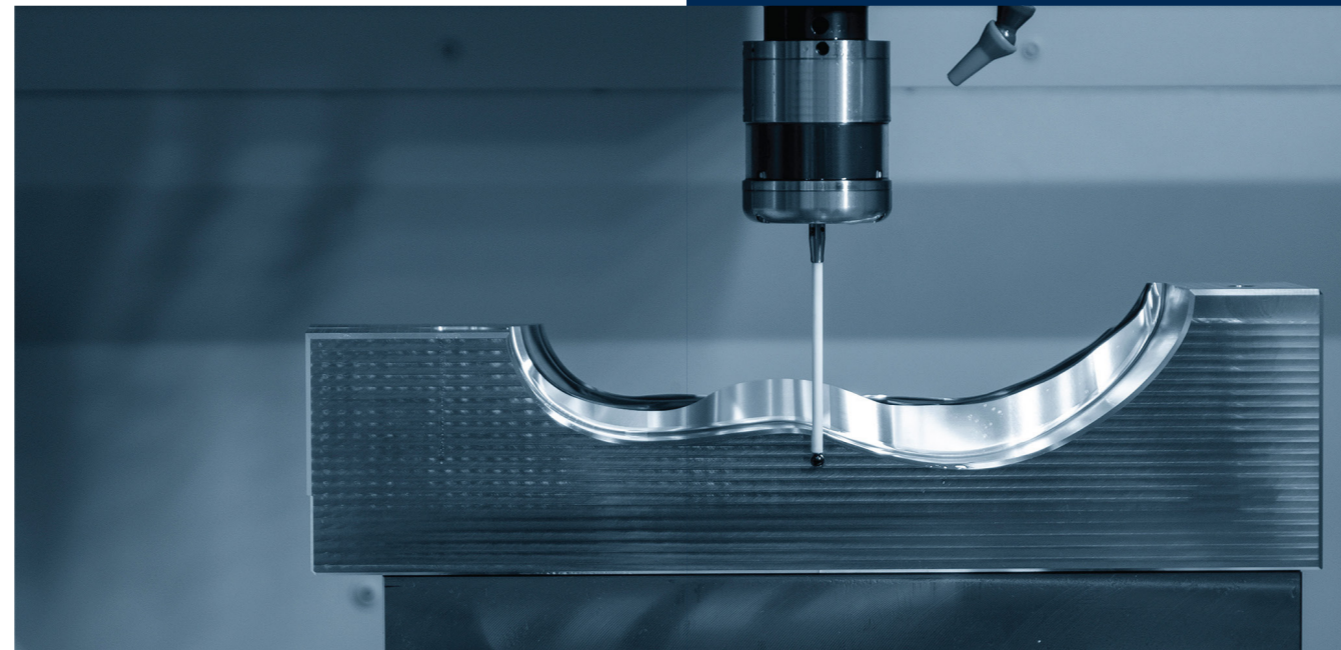
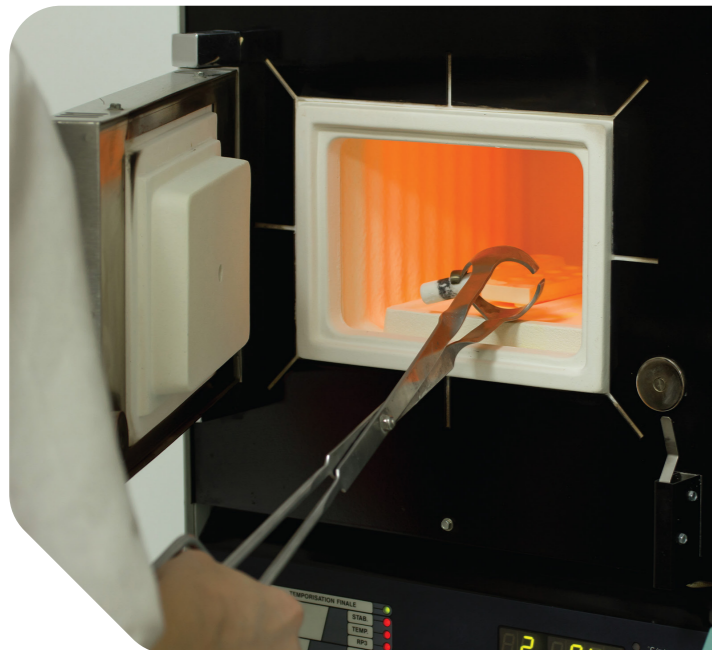
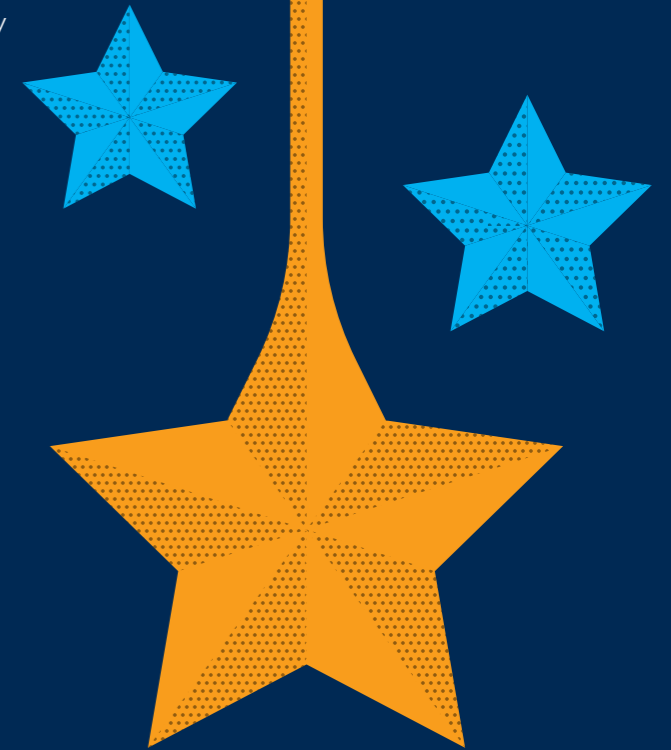
At Mahadev Precision Cast, we also offer custom grade castings as per the customer's requirements.

## Assuring Compliance, Accomplishing Excellence

At Mahadev Precision Cast, we prioritize quality in all aspects of our production process. Our dedication to delivering high-standard products is reflected in our use of modern instrumentation and skilled professionals to carry out rigorous quality checks at every stage of production.

Throughout production, we carry out several quality inspection activities:

- **Chemical analysis :**  
With Spectomaxx spectrometers
- **Inspection of Metallurgical microstructure :**  
With an optical microscope
- **Static mechanical testing :**  
With universal Testing machine & Charpy Pendulum
- **Inspection of moulding sand quality :**  
Complete Sand Testing Facilities
- **Hardness test :**  
with Brinell Vickers & Rockwell durometers





# Expanding **Vertically**, Evolving **Globally**



## Our Esteemed **Clients**

**Mazak**



**TECO**

**chiron**

**SIEMENS**

**ABB**



Smart solutions.  
Strong relationships.



**AceMicromatic**  
Group



📍 Survey No. 145, Mahadev Road, Kothariya Main Road,  
Lothada, Rajkot-360024. (Gujarat-INDIA)

☎ +91 281 2782325/6

✉ [info@mahadevprecisioncast.co.in](mailto:info@mahadevprecisioncast.co.in)

🌐 [www.mahadevprecisioncast.com](http://www.mahadevprecisioncast.com)



Scan the code to  
explore more